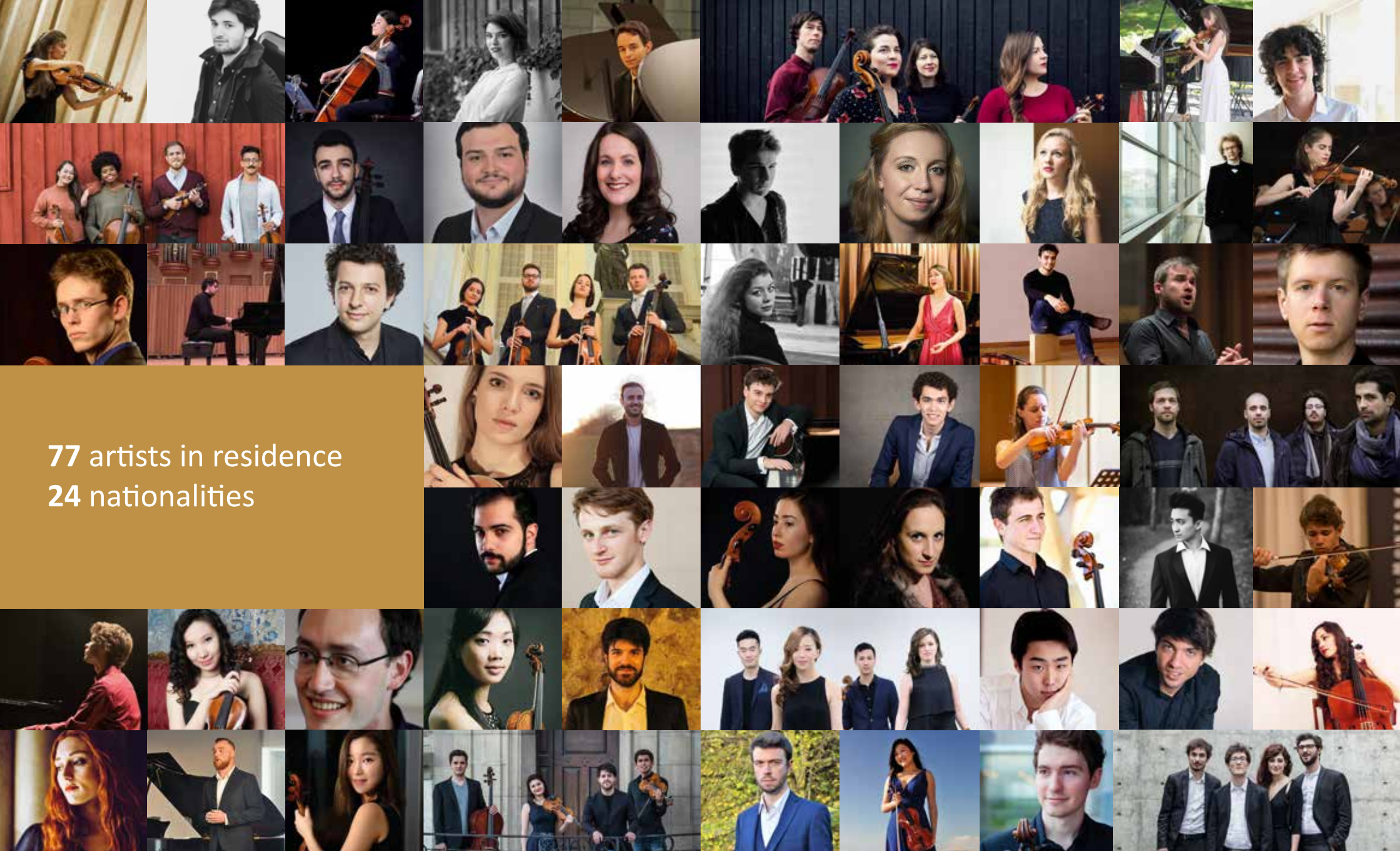




QUEEN MUSIC
ELISABETH CHAPEL

Music Chapel

Handbook for Artists in Residence
2019-2020



77 artists in residence
24 nationalities

Main Sponsor



Co-sponsors



Table of contents

1. Queen Elisabeth Music Chapel	05
1.1 Introduction	06
1.2 Charter	09
2. The Music Chapel's Six Pillars	11
2.1 High-level training	12
2.1.1 Artistic Department	12
Masters in Residence	
Visiting artists	
Professors	
Accompanists	
2.1.2 Academic Cycles	18
Young artists	
Artists in Residence	
Artist Diploma	
Artist Diploma final recital	
Associated Artists in residence	
Final examinations	
Agreement with the Koninklijk Conservatorium Brussel (KCB)	
2.1.3 Voice	21
enoa	
2.1.4 Residents commitment	23
Copyright and intellectual property	
External commitments	
Schedule	
2.1.5 Contact	25
2.2 On Stage	26
2.2.1 Cultural Department	26
Objectives of the concerts	
2.2.2 Collaborations	26
Orchestras	
Festivals	
Academies	
Productions/coproductions	
Concert halls	
Midday sessions	
Educational Program	
MuCH Ensemble	
MuCH Creation	
2.2.3 Concert participation procedure	29
Applying	
Artistic fees and reimbursement of expenses	
Travel expenses	
2.2.4 Opera training center - Studio Productions	32

2.2.5 Contact	32
2.3 Personal Development/Artist Village	34
2.3.1 Well being	34
2.3.2 Quality cooking	35
2.3.3 Artist Village activities	35
2.3.4 French Lessons	36
2.3.5 Resident logistics and social support	36
2.4 Community Projects	38
2.5 Career Development	39
2.5.1 Promotion	39
2.5.2 Public Promotion: the Music Chapel Community	42
2.5.3 Professional networking	43
2.5.4 DVD	43
2.5.5 Available instruments	44
2.5.6 CD collection	45
2.5.7 Library	45
2.5.8 Contact	46
2.6 Residency	47
The campus	
2.6.1 Board and lodging	47
General	
Boarding residents	
Financial conditions for full time occupancy	
Meals	
Transport	
Housekeeping	
Occasional boarding	
Entertainment	
2.6.2 Contact	53
3. Artists in Residence 2019-20	55
4. Admissions	65
4.1 Administration	66
4.2 Tuition	67
4.3 Payment schedule	67
4.4 Financial Aid	67
4.5 Pledge of honor	68
4.6 The financial aspect of the Music Chapel	69
Source of funds	
Uses of funds	
5. General Information	71
5.1 Music Chapel team	72
5.2 Intranet	78
5.3 Miscellaneous	79



Queen Elisabeth Music Chapel

Under the Honorary Chairmanship
of Her Majesty Queen Paola

1. Queen Elisabeth Music Chapel

*Under the Honorary Chairmanship of
Her Majesty Queen Paola*

1.1 Introduction

The origins of the Music Chapel rest on two strong personalities: Queen Elisabeth, a violinist keen to help young talent, and Eugène Ysaÿe, one of the greatest violinists and composers of his time. The Music Chapel was inaugurated on 12th July 1939. It is known for teaching exceptionally talented young musicians. At the time, the famous critic of the day, Emile Vuillermoz, described the Music Chapel as a sort of “modern Villa Medici”. After the Second World War, the Music Chapel resumed its role as an educational institution in 1956. Up to 2004, it welcomed a dozen young musicians and composers in residence, each supervised by a professor of their choice, for three-year cycles. Several generations of elite musicians were to stay in the Music Chapel, occupying an eminent place on stage or in higher education.

In 2004, the Music Chapel was thoroughly restructured. Its artistic training is based on three concepts:

- **Openness:** though embedded in the Belgian landscape, the Music Chapel has an international vocation;
- **Flexibility:** the Music Chapel tries to adapt to the profile of each young musician by offering a customized program (variable cycles of study carefully adapted to the actual needs of the most promising young and very young musicians);
- **Excellence:** The Music Chapel offers its soloists in residence the best educational environment with five Masters in Residence, surrounded by eminent colleagues:
 - **Louis Lortie** for piano,
 - **Augustin Dumay** for violin,
 - **Miguel da Silva** for viola and chamber music,
 - **Gary Hoffman** for cello,
 - **José van Dam** for voice,
 - **Sophie Koch**, guest master, for voice,
 - **Gregor Sigl and Vineta Sareika from Artemis Quartet** for chamber music,
 - **Jean-Claude Vanden Eynden**, guest master, for chamber music

The Music Chapel is the only music institution to advance along the following six pillars:

- 1. High-level training:** the training rests on a system of knowledge transmission between the Masters in Residence and our musicians.
 - 2. On stage:** the Music Chapel offers artists in residence the opportunity to perform on stage through a particularly extensive program of concerts and recitals in collaboration with orchestras, festivals and concert halls, as well as productions and coproductions.
 - 3. Career development:** the Music Chapel seeks to support artists in residence in the initial stages of their career, helping them make a name for themselves through promotion (CD collection), media and social sharing, European networking, student assistance and the loan of instruments.
 - 4. Personal development:** the shaping of the musicians’ artistic personality is important for the Music Chapel as is the development of their physical and emotional healthcare needs. This has led to the development of several projects:
 - Artists Village: focusing on the residents and their everyday lives, highlighting the psychological part of the residency;
 - mental coaching;
 - student logistics and social support;
 - 5. Community Projects:** creation and development of children’s choirs by Maria João Pires with children from difficult neighborhoods or from impoverished overseas regions.
 - 6. Residency:** our young soloists are residents at the Chapel throughout the year. In 2019-20 we will welcome 77 young artists of 24 different nationalities.
- In parallel with the renovation of the content, the Music Chapel also completed a financial and legal restructuring in 2008, which, thanks to the support of its privileged partners in Belgium since 2004 (La Monnaie, Bozar, the Queen Elisabeth Competition, the Euphonia Foundation and the Brussels Philharmonic Society), enables it today to develop from two bases:
- a public interest foundation, the Queen Elisabeth Music Chapel, which manages the operational part of the project;

- a public limited company with a social purpose, the *Chapelle Musicale*, owner of the real estate and its equipment.

The most recent challenge, the development of the facilities, which are indispensable for a flourishing artistic and cultural program, was achieved in January 2015: the construction of new residency studios, music studios, a theater workshop and a concert hall. The support of public and private partners had been of the utmost importance in making this dream a reality.

I would like to take this opportunity to welcome all the young soloists in residence, those who are here for an additional year as well as those who just started this session with us. The Music Chapel is here to help them achieve their goals with their teachers and the team of the institution. I really wish you all the best for this new adventure with us and hope this experience will be very useful and stimulating.

Welcome to the Music Chapel!



Bernard de Launoit
Executive President

1.2 Charter

A prestigious international center of excellence for artistic training of exceptionally gifted young musicians in piano, violin, viola, cello, chamber music and voice that will form the musicians of tomorrow.

The Queen Elisabeth Music Chapel develops an artistic project enabling young musical talents, by means of demanding, customized instruction, to advance along three lines: the shaping of the musician's artistic personality, thanks to apprenticeship under a Master; the perfecting of his or her instrumental or voice technique, through the instruction and support of the Master and other teachers; and lastly, the launch of a professional career through a particularly extensive program of concerts and recitals, so as to get used to facing audiences at various levels. Throughout this process, the Queen Elisabeth Music Chapel endeavors to develop the young musician's skills, while preserving his or her artistic personality.

The **presence of Masters in Residence**, who pursue a highly intensive professional career in the world of music, and their role in **guiding young musical talents**, constitute the **cornerstone** of the educational project. The Master's instruction is broader than a mere technical or theoretical transfer, but covers artistic creation as a whole. The Master passes on a philosophy of music and life to the young musical talent.

The Master's priority is to develop the artistic personality of the young talent while leaving him or her greater autonomy as he or she matures and his or her artistic sensitivity grows. Apprenticeship under the Master entails an informal transmission of professional experience, advice and support upon embarking on a professional career, and sharing an experience when the Master and the young musical talent perform together.

All this work is performed in an **ideal environment** for concentration, work, meditation, conviviality and exchange. The quality of this exceptional setting, and the proximity of the Music Chapel Team, the teaching staff and the young musicians, constitute an integral part of the educational project. The Music Chapel attaches the utmost importance to the coherence between its teaching philosophy and the quality of the environment in which instruction is imparted.

This educational project is bolstered by the **cultural project** of the Queen Elisabeth Music Chapel, making it a center for the production of music and on-stage performance. All these elements make the Music Chapel a unique **laboratory of life and musical creativity in Europe**, where Masters in Residence, teachers, young musical talents, soloists and ensembles who perform in concerts or reside at the Music Chapel, can mutually enrich one another.

In this musical environment, the public, and in particular the **friends, patrons and sponsors of the Queen Elisabeth Music Chapel, who are involved in the project**, are constructing and sharing the experience through close and privileged relations with the team of the Music Chapel, the Masters in Residence, the young musical talents and other artists.

PART 2

The Music Chapel's Six Pillars

© Méliane F. Photography

2. The Music Chapel's Six Pillars

2.1 High-level training

The Music Chapel is a center of excellence for high-level training that is based on three concepts:

- shaping the musician's artistic personality;
- improving his or her instrumental or voice technique;
- launching a professional career through a particularly extensive program of concerts and recitals.

Because every musician is different, we believe it is important to prepare a customized curriculum and to take the artist's profile into consideration.

The presence of Masters in Residence, who each pursue an intensive professional career, and their role in guiding young musical talents, constitute the cornerstone of our educational project. Collaboration with a mentor creates a genuine feeling of knowledge transmission. But in addition to the Masters in Residence, the Music Chapel also welcomes visiting artists. Leading classical artists regularly give master classes, workshops, chamber music coaching, and performances side by side with our young soloists.

2.1.1 Artistic Department

Artistic Director

Anne-Lise Parotte



Masters in Residence

Gregor Sigl & Vineta Sareika,
Artemis Quartet, *chamber music*



José van Dam, *voice*
Sophie Koch (*Guest Master*), *voice*



Augustin Dumay, *violin*



Miguel da Silva, *viola & chamber music*



Gary Hoffman, *cello*



Louis Lortie, *piano*



Jean-Claude Vanden Eynden (*Guest Master*), *chamber music*



Visiting Artists 2019-20

I. Abdrazakov
J. Ammon
P. Anderszewski
C. Belcea
J. Bell
G. Bellom
F. Braley
R. Capuçon
S. Degout
S. Denève
J. Feddeck
P. Graffin
M. Guttman
J. Hoffman
Jerusalem Quartet
JJ. Kantorow
A. Lacroix
H. Noben
H. Rohde
E. Runge
P. Sireuil
K. Zehnder

Professors & Coaches

Piano Department

Avedis Kouyoumdjian, *professor*



Jean-Claude Vanden Eynden, *concerto coach*



Violin Department

Lorenzo Gatto, *guest professor*



Yossif Ivanov, *guest professor*



Christia Hudziy, *piano accompanist*



Dana Protopopescu, *piano coach*



Viola Department

Olga Kirpicheva, *piano accompanist*



Cello Department

Jeroen Reuling, *professor*



Dana Protopopescu, *piano coach*



Katsura Mizumoto, *piano accompanist*



Michael Cohen, *piano accompanist*



Voice Department

Kira Parfeevets, *opera coach & Russian coach*



Sophie Raynaud, *opera coach*



Olivier Reboul, *coach*



Hélène Lucas, *coach (Lied and mélodie)*



Philippe Riga, *piano coach (Lied and mélodie), concerts*



Philip Richardson, *piano coach & English coach*



Federico Tibone, *piano accompanist (lessons & concert) & Italian coach*



Marie Datcharry, *piano accompanist (lessons & concert)*



Julie Delbart, *piano accompanist (lessons & concert)*



Christiane Gleis, *German coach*



Alain Garichot, *stage director*



Accompanists

The Music Chapel makes available throughout the year an accompanist to all violinists, cellists, singers and pianists, according to the following schedule:

For violinists / cellists / violists

Accompaniment for Master's lessons.

Accompaniment in professors' classes (on request).

On request and upon approval from the Artistic Department, accompaniment may also be provided for rehearsals.

For singers

Accompaniment for voice courses of Master in Residence and teachers. Répétiteurs and coaches available weekly.

For pianists

Possible accompaniment for concertos, subject to prior written request to the artistic coordinator.

For concerts

A total of two hours of accompaniment will be provided to prepare a concert.

Any request for an accompanist outside the number of hours defined above must be made in writing to the artistic coordinator. The Music Chapel will ensure to provide the services of an accompanist within the limits of the available budget.

2.1.2 Academic Cycles

Young artists

The Music Chapel sets no minimum age for the admission of exceptional artists to most of its programs.

Artists in residence

The Artist in residence cycle is an advanced ("graduate level") training program focused on instrumental training and professional insertion. It provides focused studies for young artists in the pre-professional stages of their careers. Qualification for this program rests exclusively on the level and quality of performance and/or achievement rather than on the attainment of specific academic credentials. Nevertheless, most entrants will

have completed their formal music education at a music conservatory or an equivalent institute of advanced music studies. The Artist in residence program varies in length from two to three years.

Artists in residence must be invited to continue their studies into the second and third years. At the end of their third year, all artists in residence must pass an exam and submit an artistic project in order to be accepted in a potential additional year at the Music Chapel.

Artist Diploma

During their curriculum at the Music Chapel, all artists in residence may be selected by the Masters in Residence in tandem with the Artistic Department to be enrolled in the *Artist Diploma cycle*. This curriculum allows artists to benefit from an extraordinary treatment (including participation to exposed concerts, recordings, etc). At the end of this cycle, an evaluation in front of an external jury gives the chance to obtain the *Artist Diploma* certificate as well as an *Artist Diploma* recital recorded and broadcasted by the radio and on our live streaming. A limited number of artists will earn the right to this recital. Artists who will have followed the Artist Diploma cycle but who won't have obtained the certificate will have the chance to give a regular concert in the following season.

Artist Diploma final recital

The Artist Diploma recital (available on evaluation, see before) takes the form of a one-hour recital whose program has been entirely chosen by the artist, in accordance with his or her personal artistic project. The form and program of the recital will be proposed by the artist at least six months in advance. The project must be approved by the relevant Master in Residence and by the Artistic Director.

This project enables the artist to express his or her creativity and imagination. The artist can make use of special lighting effects, staging (insofar as possible in the new hall), screenings, etc. He or she can also include pieces of chamber music with guests the artist has invited.

The budget for the production of this project must be approved in the early stages if it is financed by the Music Chapel.

A specific communication campaign involving social media, invitations to agents, program planners, orchestras, concert halls and such will be launched on this occasion, enabling the artists to use this concert to showcase their talent.

On this occasion, the artists will also have the opportunity to prepare a personal presentation (including a demo, a biography, their artistic program and

photographs).

Associated Artists in Residence

The Associated Artist in Residence is an artist or an ensemble with an active career who wishes to collaborate with the Music Chapel for specific projects : recordings, chamber music projects, etc. The admission to this particular status is made upon live audition.

The conditions of each project are set by the Music Chapel and the artist/ensemble, under the supervision of the related Master in Residence.

Associated Artists

An Associated Artist is an artist who, having obtained an Artist Diploma and upon invitation from QEMC, wishes to remain in close contact with the Chapel. Pursuing an active career, the Associated Artist can benefit occasionally from the advice of the Masters in Residence or invited artists, from the support of the Chapel. At the request of the institution, he or she can also take part in artistic projects.

Final examination dates

Voice: 28th May 2020 / **Violin:** 8th June 2020 / **Piano:** 10th June 2020
Cello: 11th June 2020 / **Chamber Music:** 15th June 2020 / **Viola:** 16th June 2020

Presence at the final examinations is **mandatory**.

Agreement with the Koninklijk Conservatorium Brussel (KCB)

Starting this year 2019-2020, a new agreement with the KCB will help facilitating simultaneous academic curriculum in both institutions.

Among others, this agreement will specify the organisation of the studies, facilitate instrument loans and initiate artistic projects in collaboration with KCB students.

For more information about the courses and credits at the KCB, you can visit www.kcb.be/en/Programmes/Music.

Contact at the Chapel: Aurélie Loreau aloreau@musicchapel.org

Contact at the KCB: Helmut De Backer helmut.de.backer@ehb.be

2.1.3 Voice

The Music Chapel, through its collaborations with Belgian and international operas has created a top-class opera training center in Brussels to prepare the most promising young singers for the vocal, physical and stage requirements involved in a career as an opera singer. Singers, whose ability is equivalent to graduation level from a European conservatory, will be enrolled for a period of two to three years in average. In order to prepare them for a career as an opera singer, the Music Chapel collaborates with enoa, orchestras, Belgian and European opera houses (La Monnaie, Opéra Royal de Wallonie, Opéra de Monte-Carlo)

enoa (European Network of Opera Academies)

The Young Opera Makers program



The **enoa** network was born from the wish of a number of operatic institutions – opera academies, festivals, foundations and producers – to work more closely together to support the professional integration of the most talented young artists and to support the development of their artistic ambitions. In a rapidly changing industry, where the role of creation, the development of new forms, the exploration of innovative creative processes and audience renewal are among the major challenges for opera professionals, the issue of the training and occupational integration of young creators and performers is of crucial importance. By offering tailored training courses, consisting of a wide variety of activities hosted by **enoa** members all over Europe, and by integrating them into international recruitment circuits, the network aims to give young artists the keys to their occupational integration and international career development. **Young Opera Makers** programme's aim is to offer an excellent training, with an interdisciplinary and contemporary approach to opera, to enable performing and experiencing creative processes, and to increase visibility and access to international recruitment circuits. Thirteen member institutions, eighteen associated partners, over a thousand young artists and some three hundred professionals make up the **enoa** community.

Festival d'Aix-en-Provence, coordinator

Académie européenne de musique, Aix-en-Provence, France

Snape Maltings

Aldeburgh, UK

Calouste Gulbenkian Foundation

Lisbon, Portugal

Theaterakademie August Everding

Munich, Germany

LOD

Ghent, Belgium

The Queen Elisabeth Music Chapel

Waterloo, Belgium

Fundación Albéniz / Escuela Superior de Música Reina Sofía

Madrid, Spain

Teatr Wielki – Polish National Opera

Warsaw, Poland

Dutch National Opera & Ballet

Amsterdam

Helsinki Festival

Finland

Les Théâtres de la Ville de Luxembourg

La Monnaie I De Munt

Belgium, Brussels

Operosa

Belgrade, Serbia

Associated partners: Verona Opera Academy, Latvian National Opera, Silbersee (ex-Vocaallab), Escola Superior de Música, Artes e Espectáculo de Porto, Escola Superior de Música de Lisboa, Oper Stuttgart, Icelandic Opera, Bregenzer Festspiele and Munich Biennale.

For more information and the list of workshops, visit the new website at

www.enoa-community.com

To register with the enoa community, please contact **Anne-Catherine Denies** who will give you a password to sign in at this address:

<http://lab.enoa-community.com/account/login>

2.1.4 Commitment of the residents

Each artist in residence has to present a proposal for an **artistic program** to be submitted to the artistic coordinator no later than the first class of the academic year.

The artistic program is an essential tool in preparing the program of concerts. It allows to monitor the evolution of each artist and to achieve artistic objectives.

The artistic program must include:

- the list of works corresponding to the artist's artistic projects;
- the name, date and works of potential external competitions and concerts;
- particular projects (specific chamber-music projects, original projects, etc.).

Any updates or changes to the artistic program must be communicated to the Artistic Director.

This document will be checked by your Master and by the Artistic Director. It will not be possible to play pieces that do not appear in your artistic program at a concert without your Master's approval.

Undeclared external engagements, whether before or after entrance in the Music Chapel, will not be accepted as valuable exemptions to the resident's duties. In case of a professional emergency, the Music Chapel will observe the necessary flexibility.

As part of their artistic curriculum at the Music Chapel, all artists in residence are required to perform **ten concerts** and other musical performances per academic year. The purpose of these concerts is to contribute to the artistic training of the residents. The concerts are organized or co-organized by the Music Chapel on its own premises and at a number of appropriate venues, inside and outside Belgium. They give residents outstanding opportunities to develop and demonstrate their skills in a real-life on-stage setting. The venues are selected by the Artistic Department in cooperation with the concert coordinators, taking into account the capabilities of each individual and their development needs and potential. No artistic fees are paid for these performances.

The annual *Garden Party* organized at the Music Chapel forms an integral part of the artistic curriculum. Attendance is compulsory. Artists in residence should adapt their personal schedules to ensure their presence. No travel expenses will be reimbursed for this occasion.

Copyrights and intellectual property

Artists in residence must accept to be **filmed or photographed** in connection with their activities at the Music Chapel. They shall also accept that these images may be used to promote the Music Chapel and associated institutions or organizations, and events organized by these.

Any and all documents, musical scores or any other form of intellectual property developed while attending the Music Chapel will remain the property of the Music Chapel, unless prior written agreement to the contrary has been obtained by the artist.

External commitments

Artists in residence may not be part of an orchestra or take part in concerts outside the Music Chapel without the prior written consent of the relevant Master in Residence. Attending classes in other music schools requires the approval of the Artistic Director. Requests should be submitted to the artistic coordinator.

Schedule

The general schedule is established by the artistic coordinator and notified at the start of the year.

Artists are required to notify **at least 48 hours** in advance their absence from a course (seminar, master class, conference) in which they are enrolled.

A medical certificate must justify any absence not notified in advance.

The schedule must be strictly adhered to. Residents must submit a list of planned absences to the artistic coordinator each month.

The Executive Committee shall take all measures that it deems necessary when a resident is unable to continue his or her studies for medical reasons.

2.1.5 Contact

Artistic Director

Anne-Lise Parotte, *Artistic Director*

alparotte@musicchapel.org

+32 471 77 77 12 - +32 2 352 01 12

Danaé Baltsavias, *Artistic coordination (cello, viola & chamber music),*

Admissions, Auditions, Student & mediation support, Artist Village

dbaltsavias@musicchapel.org

+32 472 62 11 81 - +32 2 352 06 64

Aurélie Loreau, *Artistic coordination (piano & violin),*

Auditions, Student & mediation support

aloreau@musicchapel.org - audition@musicchapel.org

+32 2 352 01 18 - +32 472 30 51 14

Anne-Catherine Denies, *Artistic coordination (voice & enoa contact)*

acdenies@musicchapel.org

+32 2 352 06 64 - +32 472 13 13 68

2.2 On stage

2.2.1 Cultural department

Objectives of the Concerts

The Music Chapel organizes a significant number of concerts per year that enable the young musicians to perform in public. Performing on stage allows them to make a name for themselves, and helps them embark on their professional career. The synergies developed by the Music Chapel with the country's cultural institutions give young talents an opportunity to enlarge the scope of their professional experience and assert their artistic personality.

In September 2015, the **Music Chapel** launched the **MuCH** concept and its **MuCH Music Season**. With the support of its partners, including the Province of Walloon Brabant, it is now making accessible to the general public more than 80 concerts in the Haas-Teichen Studio, which has a seating capacity of 240. **MuCH**: With this acronym, the **Music Chapel** wishes to show that it is both **much more than a school** and **much more than a concert hall**.

The purpose of these events is also to promote the Music Chapel. Attendance and/or participation at the major concerts organized by the Music Chapel is compulsory (Gala Concert, Benefactors' Concert, Christmas Concert at the Royal Palace, radio and television broadcasts, etc.). **Cancellations are authorized only in case of duly reasoned *force majeure*.**

For concerts organized by the Music Chapel on behalf of third parties, residents will respect their commitments as being the equivalent of a contractual arrangement between the Music Chapel and the resident. It is explicitly understood that the Music Chapel does not act as an employer towards the residents, unless duly specified as such in a contractual arrangement.

An artistic evaluation of the resident will be carried out once a year. His/Her cooperation in programming and performing the concerts will be taken into account in his or her overall evaluation.

2.2.2 Collaborations

The Music Chapel's range of collaborations is extensive:

- **Orchestras**
- **Festivals**

- **Academies**
- **Productions and coproductions**
- **Concert halls**
- **Midday Sessions**
- **Educational Program**
- **Community projects (see 2.4)**
- **MuCH Ensemble**
- **MuCH Creations**

Orchestras such as:

Koninklijk Concertgebouworkest (the Netherlands), London Chamber Orchestra (UK), Sinfonia Varsovia (Poland), Kansai Philharmonic Orchestra (Japan), Musica Viva (Russia), Chamber Orchestra of Philadelphia (US), Il Cameresti del Maggio Musicale (Italy), Orchestre National de Lille (France), Le Concert Olympique, Orchestre de Chambre Nouvelle Europe (France), Russian Chamber Philharmonic (Russia), Lithuanian Chamber Orchestra (Lithuania), Orquestra Gubelkian (Portugal), National Orchestra of Belgium, Brussels Philharmonic, Orchestre Philharmonique Royal de Liège, Royal Chamber Orchestra of Wallonia, de Filharmonie, Brussels Chamber Orchestra, Bruocsella Symphony Orchestra, Vlaams Radio Koor, Octopus, Orfeo Kamerork-est, Orchestre Symphonique de Bienne Soleur, Conservatoire-Orchestre de Caen, Namur Chamber Orchestra.

Festivals such as:

Vauxhall Summer Festival, Midi Minimes, Été Mosan, Classissimo, Festival de Wallonie, Festival Musical de Lasne, Zomer van St Pieter, Côté cour côté jardin, De Vrienden van Het Zoute, Festival Van Vlaanderen, Festival Resonances, The Poona Music Society (India), Abu Dhabi Music & Arts Foundation (United Arab Emirates), Schiermonnikoogfestival (the Netherlands), Vexin Festival (France), Radio France Montpellier Festival (France), Festival de Menton (France), Les Flâneries Musicales de Reims (France), Académie Internationale d'été de Nice (France), Les Sommets du Classique (Switzerland), Pietrasanta in Concerto (Italy), Les Nuits du Château de la Moutte (France), Festival Eva Ganizate (France), Festival 1001 Notes (France), Festival Muse Salentine (Italy), Sion Festival (Switzerland), Festival Lacmus (Italy), Festival Forget (Canada), Winter International Arts Festival (Russia).

Academies:

International Music and Dance Academy of Domaine Forget, Académie musicale de Villecroze, Sochi Musical Academy.

Productions and coproductions:

Festival 2019 at Flagey (4th to 7th December 2020)

Christmas Concert 2019 at the Royal Palace

Gala Concert (13th March 2020)

MuCH Waterloo Festival (10th to 14th June 2020)

MuCH Season

Community concerts

Concert halls:

Flagey, BOZAR, La Monnaie, Maison de la musique, Royal Library of Belgium, Royal Palace of Brussels, Cercle de Wallonie, Centre culturel de Stavelot, Korean Cultural Center, Auditorium of the Louvre, Royal Conservatory Ghent, Dieleghem Abbey, Fondation du Pays de Geminiacum, deSingel, Liège, Salle Philharmonique, Mons Arsonic, Museum of Music Instruments, Ferme du Biéreau.

Midday Sessions

These informal bimonthly showcases are designed to provide residents with the opportunity to practice performing. The artists can use these sessions as run-through opportunities for important upcoming concerts, competitions or recording, or just to try out a new piece that they need to get comfortable with.

Also, in the spirit of studio classes, we invite professors or assistant professors as well as other staff and some guests to come and listen. The artists are encouraged to come and listen to each other, and provide feedback.

Time: TBC (usually at the end of the morning)

Dates: Artists can request a specific date depending on their requirements, but the Artistic Director and the professors can also request them. They will be confirmed by the artistic department after checking the availability of the Grande Salle or H.T. Hall and, when necessary, of the accompanists.

Contact: artistic coordinator of your section

Educational Program

The Music Chapel collaborates with schools to allow children to discover music. Groups of kids come and listen to morning concerts at Chapel (about 5x/year), and Chapel soloists go and perform in schools (about 4x/year).

You will share your passion and experience with these young children through a short performance followed by informal speeches. This is an integral part of your curriculum at the Music Chapel and gives you an opportunity to grow future generations of musicians.

MuCH Ensemble

All string players must take part to at least one session of the MuCH Ensemble during the year. This session will count as one of the annual ten mandatory concerts.

MuCH Creation

Artists in residence could be asked to participate to at least one MuCH creation (in-house production).

2.2.3 Concert participation procedure

Applying

Several times per year, artists will receive an e-mail with a list of concerts they can apply for.

- To apply for a concert, you need to put a cross in the YES column (or the NO column if not available).
- The proposed program needs to be filled in: two or three pieces ready to be performed (with timing). This program must be approved by the Artistic Director.

Once the Concert Department has received the replies, each resident will receive an e-mail confirming the concert dates if they are chosen and discussing the final music program, etc.

The date and musical program are then fixed and are binding.

About one week before each concert, the Concert Department will send the soloists a production sheet, with all organizational details. They are invited to print it and take it with them to the concert, so that they will be in possession of all useful phone numbers, the rehearsal timetable, the address of the venue, etc.

Strong recommendations:

- The concert list should be completed as soon as possible, because some programming occurs very quickly. If you wait too long, you will have less chance of being programmed.
- When proposing a musical program, soloists should think about their pedagogical approach! If they are working on Beethoven during this period, they should not program Bach for their concert!
- Musical programs are written and include: Composer, title, tonality, opus, other keys + movements; and for singers: Composer, opera, role, aria.
- Once the accompanist is known (for violinists, cellists and singers), **soloists should organize rehearsals in advance!**

Rules:

- Once a concert has been confirmed, **it can no longer be cancelled.**
- The confirmed musical program must be approved by the teacher or the Artistic Department. It is very important to plan lessons according to performances.
- The final musical program must NOT be changed. Once it has been agreed, it has the status of a contract.
- When playing with an orchestra, soloists should be available five days before-hand, to anticipate rehearsals.
- Some important concerts require a preparation plan, with obligatory artistic checking by the Artistic Director: for example, in case of an audience in a midday session.

For in-house concerts, the staff counts on the residents to act as a page-turner (paid 25€).

Artistic fees and reimbursement of expenses

The fees will be paid at the end of the academic year, totalizing all of the year's concerts, including summer festivals. Once artists in residence have fulfilled their commitment to perform the ten required concerts, they are eligible for revenue-generating performances organized or produced by the Music Chapel: the 11th and subsequent concerts will be paid at the value of the highest categories performed during the year. For such performances, an artistic fee will be paid according to a standard schedule for soloists.

Note that artistic fees are considered **as taxable income** and have to be reported as such to the Belgian fiscal authorities. For non-Belgian tax residents, a withholding tax of 18 percent must be applied.

The concert category is always mentioned in the list of concerts. This list is available to you on the Google Drive (see 5.2).

- **Category C:** Major performance with an international audience **500 €**
- **Category B:** Important regional performance **250 €**
- **Category A+:** special repertoire upon request, paid directly **200€**
- **Category A:** Local performance with a limited audience **150 €**
- **Category O:** In-house concert/Chapel production **100 €**
- **Category E:** Exceptional concert paid directly
Fee to be discussed for each project

The standard schedule for ensembles is (per person):

- **Category C:** Major performance with an international audience **400 €**
- **Category B:** Important regional performance **200 €**
- **Category A+:** special repertoire upon request, paid directly **200€**
- **Category A:** Local performance with a limited audience **120 €**
- **Category O:** In-house concert/Chapel production **100 €**
- **Category E:** Exceptional concert paid directly
Fee to be discussed for each project

Please note that public masterclasses, final examination and projects in collaboration with academies do not count as paid concerts as they are fully part of your educational training.

Travel expenses

- For performances that take place at the Queen Elisabeth Music Chapel or in the greater Brussels area, no travel expenses will be reimbursed, except if the artist is making the journey especially for the concert, upon request of the Music Chapel.
- For performances outside the greater Brussels area, travel expenses will be reimbursed on the basis of second-class train fares, from the greater Brussels area to the concert venue.

- For performances outside Belgium, travel expenses will be reimbursed on a flat fee basis, depending on the contract.

These reimbursements will also apply for rehearsals outside the greater Brussels area. In certain cases, a flat per diem fee for travel and miscellaneous expenses may apply. Insofar as possible, transport will be made available. The reimbursement of expenses and the payment of artistic fees will be made at the end of the academic year, based on a final balance to be drawn up for each artist in residence.

2.2.4 Opera training center – Studio Productions

Artists in residence are required to participate actively in the entire project and take part in all rehearsals. The role distribution of the production will be determined in consultation with the Master in Residence and the professors, in coordination with the Artistic Department. Since the aim of the project is to train young talents through professional experience, no artistic fees will be paid.

Participating artists receive a flat-rate reimbursement of expenses (transport and per diem) of 25 € per day of rehearsals and performances, organized outside the Music Chapel with the exception of engagements under contract with La Monnaie or another opera house.

2.2.5 Contact

Bénédicte Bruynseels, *cultural and production coordination*

bbrunyseels@musicchapel.org

+32 2 352 01 14

+32 473 44 14 54

Florence Leeman, *project manager*

fleeman@musicchapel.org

+32 2 352 01 14

+32 471 89 53 75

Natsumi Krisher, *junior project manager*

+32 499 31 22 42

+32 2 352 01 14

Kyung Sook Langley, *production assistant*

kslangley@musicchapel.org

+32 2 352 01 14

Auguste Semanzi, *stage manager*

asemanzi@musicchapel.org

+32 472 17 23 68

For opera studios:

Anne-Lise Parotte

alparotte@musicchapel.org

+32 471 77 77 12

+32 2 352 01 12

Anne-Catherine Denies

acdenies@musicchapel.org

+32 2 352 06 64

+32 472 13 13 68

2.3 Personal Development / Artist Village

This educational project is bolstered by the cultural project of the Music Chapel, making it a center for the production and on-stage performance of music. All these elements make the Music Chapel a unique laboratory for life and musical creativity in Europe, where Masters in Residence, teachers, young musical talents, soloists and ensembles that perform in concerts or reside at the Music Chapel, mutually enrich one another.

We created a new department with the artists and the team called the Artist Village. The emphasis here is on the residents and their everyday lives, and on the psychological aspect of the residency. This new “mood” and dynamic, based on a more human aspect, will help residents manage their lives better and create a genuine feeling of companionship.

The Artist Village therefore promotes five elements to reach a greater coherence between the teaching philosophy and the quality of the environment in a more dynamic residency, organizing:

- **well-being;**
- **quality cooking;**
- **Artist Village activities;**
- **music analysis;**
- **resident logistics and social support.**

Cooperating with many artists and professionals, we hope to welcome all artists in a friendly and warm manner.

2.3.1 Well-being

Dance by

Darren Ross

Dance lessons open to all sections

Make up by

Orly Quirico

Workshop, for the stage (audition - concert - production), for the screen (recording DVD - TV). For women and men.

Physiotherapy by

Anne Schütt

Individual checkup and group sessions by section focusing on the enhancement of the artistic performance and prevention of injuries.

Personal accompaniment by

Tica Cabral

Her weekly presence allows a personal conversation, and if necessary, she can guide to a professional coach.

Mental coaching by

Bernard Dewamme in collaboration with Mentally Fit Institution

Individual coaching sessions on how to cope with pressure, competition, stamina, audience, the constant need to improve, creativity, talent development, media ...

Sport lessons by

Yung Gascard

Every Tuesday, come and exercise with fun with our coach (outdoors, inside the Chapel or at a private gym)!

2.3.2 Quality Cooking

The Music Chapel provides lunch in the Restaurant.

The Artist Village provides basic ingredients for boarding artists to prepare their breakfasts and dinner.

Cooking activities by

Tica Cabral

2.3.3 Artist Village activities

Talks

Different conferences are organized all over the year (Grand Rendez-Vous, conferences organized by the Funding Department)

Cultural activities

Tourism in Belgium (Carnaval de Binche, visit of Brussels, the seaside, etc.)

Concerts in Belgian concert halls

Entertainment activities

Board game nights

Movie nights

Contact

Danaé Baltsavias

dbaltsavias@musicchapel.org

2.3.4 French Lessons

The Music Chapel provides French lessons once a week to allow you to integrate in the environment of the Chapel. Several levels are available upon request.

Contact

Aurélie Loreau

aloreau@musicchapel.org

2.3.5 Resident logistics and social support

Everyday life

Lami Tchabebou and **Aurore Somme** provide residents with general guidelines on how to live together in a community, ensuring that everyone knows how to behave, how to keep a studio or room clean, make their bed, not leave things lying around, and so forth.

Mediation

The Artist Village mediation allows our young soloists to express their expectations. Please write to us to express your thoughts.

Resident logistics and social support

To help residents with everyday life management:

- Administrative procedures with local authorities: visa, residence permit, work permit, etc.
- Tax compliance
- New logistical and psychological support for foreigners
- The search for private scholarships, or processes for social assistance, foster families, etc.

Contact

Danaé Baltsavias

dbaltsavias@musicchapel.org

Aurélie Loreau

aloreau@musicchapel.org



2.4 Community Projects

Chair granted by Fondation Futur21



A new social dimension (first called “Durability”) was introduced at the Music Chapel in 2012 with the arrival of Maria João Pires and the launch of the Equinox choirs. The creation of a “Community Projects” chair in 2016 with the support of the private foundation Futur21 reinforces the Chapel’s desire to broaden the field of social applications offered to the young talents enrolled in all the disciplines taught at the Chapel. The chair encompasses all the social and sustainable projects that the Music Chapel has included in its season, both on its site in Waterloo and “out of the box” in various musical dissemination and production projects. Opening oneself to the other, to other types of audiences and sharing one’s talent: that is the aim of the “Community” axis.

These projects take different shapes:

- Sharing the talent and knowledge of Music Chapel’s artists in residence with new audiences that don’t have access to music, including people in precarious situation (non-profit organization Nativitas), asylum seekers and refugees (non-profit organization Convivial), prisoners (Prison of Ittre), hospitalized people (St-Luc Hospital)...
- Music as a source of reflexion, with concerts based on social and topical themes.
- The transmission of music to disadvantaged people (Equinox choirs - www.chorales-equinox.be)

All artists in residence must take part to at least one of these concerts per year. Ecology, sustainability, sharing: music can help change the world!

Contact

Laura Wiatr

lwiatr@musicchapel.org

2.5 Career development

2.5.1 Promotion

The Music Chapel recognizes how important it is to support its musicians at the start of their career and help them make a name for themselves. We consider their professional background, highlight their strengths to project the best image to the public, and assist them in planning their career in the long term. The Music Chapel also helps artists in residence increase their promotional value using different communication channels, whether the press, television, radio or the Internet, so that musicians can have the best exposure possible.

Social networks

As an institution, the Music Chapel is very present on social networks. Thanks to our online community, we will help you develop your online presence to increase your visibility.

Facebook, Google+, Twitter, Youtube, Instagram, LinkedIn

Profile: **@musicchapel**

On these social networks, we will tag your names in the events and on the pictures: do not hesitate to share, like, comment. It helps us promote your concerts, and increase your audience.

Some Hashtags:

- #MuCHalumni: news regarding our alumni
- #MuCH4you: documenting the MuCH Waterloo Festival
- #MuCHrecording: news and pictures related to our recording facilities
- #MuCHontour: news of residencies abroad

Do not hesitate to use those hashtags yourself, and to tag the Music Chapel. Please advise us if you don’t like a picture or video of yourself: we will make our best to get in line with you.

Facebook. Our page has nearly 10 000 fans: do not hesitate to share it to your network to increase this number. The page is used for general promotion, to follow your news, and to promote the concerts thanks to Facebook events: you can easily share those in which you are playing with your network.

Find us: Chapelle Musicale Reine Elisabeth

Twitter. The twitter account is designed to share our news with the press.
Find us: musicchapel

Google+. Find the photo albums of every event at Music Chapel.
Find us: musicchapel

Youtube. Find all livestreamings (on replay) on our youtube channel:
concerts, trailers, clips, interviews, etc.
Find us: musicchapel

Instagram. Beautiful pictures of the Music Chapel and of the artists in
residence are published here.
Find us: musicchapel

LinkedIn. Our professional network helps us develop professional
partnerships.
Find us: musicchapel

Contact for Social networks coordination

Sophie van der Stegen
svanderstegen@musicchapel.org

Laure Raimondi
lraimondi@musicchapel.org

Press

The Music Chapel understands how important it is to use the press to promote its young musicians. Therefore, we help artists in residence elaborate their resume and press pack. It is important that you have an updated CV and pictures ready for your promotion.

The communication department will also assist you in preparing your own complete press pack: do not hesitate to send us an updated version of your CV and pictures.

In case you need any new pictures for your CV, it will be possible to organize photo sessions at some moments that will be set during the year. Also, we kindly ask you **to mention your presence at Music Chapel in your CV**, even when you leave the institution, mentioning the time you spent here, which diploma you obtained, and with which Master in Residence you studied.

Interviews

You will sometimes be asked to take part to interviews with journalists (TV, radio, written press, blogs, etc) or press conferences. We kindly ask you to help us promote you by cooperating in the press requests that are important for your career.

Radio broadcasts

The Music Chapel seeks to promote its young musicians with radio broadcasts of their concerts. To do so, we collaborate with the radio stations Musiq3 and Klara. However, we also have our own recordings of our soloists' concerts. Artists in residence commit themselves to accept the recording of their concerts. Sometimes those concerts are live broadcasted on our Facebook page and on our website, as well as on our partners' websites. Some concerts are also recorded by IAD students (school for sound engineers): those recordings will be sent out to you for your personal archive.

Contact for the IAD recordings

Auguste Semanzi
asemanzi@musicchapel.org

Photos

Many activities will be photographed by our in-house photographer. Her pictures will be published on the social networks and used in our print documentation. You are allowed to use the photographs as well, mentioning the copyright of the photographer as well as the Queen Elisabeth Music Chapel, when possible (Facebook, Twitter, etc).

Print promotion

To best promote our soloists, we elaborate campaigns using different means of communication. It develops a poster campaign using flyers, posters, street banners and bus-shelter ads.

Contact for press, social networks, photos, print promotion, radio:

Sophie van der Stegen
svanderstegen@musicchapel.org

Laure Raimondi
lraimondi@musicchapel.org

2.5.2 Public Promotion: the Music Chapel Community

MuCH Music Season

2019-20 is the fifth season programmed at the Music Chapel, on the stage of the H.T. Hall. It includes 80 concerts, open to the public. Tickets are available on www.musicchapel.org. Artists in residence at the Music Chapel are welcome to attend those concerts for free: two tickets per artist per concert can be booked via the website, with the following promo code: **#muchstudents1920**.

The MuCH Music Season meets a very wide range of public, that our artists will be confronted to when performing on stage.

Family and kids: during the concerts of the “Discovery” Series, the children are allowed to come in the hall. A bit of noise is to be expected. The aim of this series is to open new generations to classical music.

School classes: “MuCH for schools” mornings are dedicated to young schoolboys and girls who come to visit the Chapel and discover the life of musicians. The concert will be followed by a question-answer session with the performing artist.

Young audience < 35: (“mychapel” subscription) the mychapel group consists of people less than 35 years old, discovering classical music in new ways. Concerts have a different approach to music that will be explained to the performing musicians.

Five concert series reflect the diversity of the MuCH Music Season:

- **Laboratory:** a series of concerts dedicated to your development as artist in residence such as masterclasses, final recital, etc.
- **Discovery:** a series of concerts more open to young audiences.
- **Guest:** a series of concerts with guest artists who are invited to perform during the season.
- **Prestige:** a series of concerts with orchestra, or with a Master in Residence, as well as the Artist Diploma recitals. The MuCH Music Season will be concluded by the MuCH Waterloo Festival. This festival takes place in several places of the city of Waterloo, during five days in June. It includes the so-called “Garden Party” where every soloist of the Music Chapel can perform.
- **Associated Artists:** concerts with alumni from the Music Chapel.

Contact

Johanna Filée

jfilee@musicchapel.org

2.5.3 Professional networking

The Music Chapel also supports its young soloists in increasing their promotional value using different communication channels. To make this happen, we help them with two promotional aspects:

• European networking

As artists, our artists in residence need to develop the best network possible. To achieve this, we believe it is important to introduce them to national and international artistic directors.

Because we realize the importance of creating a network, even beyond Belgium, we are part of enoa (European Network of Opera Academies), thereby allowing our singers to create a European network, to participate in many workshops organized by the network’s partners, and to take part in new opera productions.

The Music Chapel also empowers its network at an international level through its Canadian Friends and American Friends branches, as well as through its partnership with the Belle-Saison, thereby offering concerts everywhere in Europe, but also in North America.

• Impresario’s days

Because meeting fellow music lovers and performers is the basis for building a career, we invite musical impresarios to each of our major concerts in order to meet our Artist Diploma musicians and listen to their performances.

2.5.4 DVD

The Music Chapel helps the artists in residence in the making of the necessary DVDs when applying for a competition. Each artist in residence is entitled to two hours of recording (preferably in one session) as well as one extra recording session for the application video to the Queen Elisabeth Competition. If you need a recording session, contact your artistic coordinator and specify which competition, the application deadline and your repertoire.

2.5.5 Available instruments

Upon request by the resident, the Music Chapel makes available for use, free of charge, a number of outstanding violins, violas, cellos and bows, belonging to the Music Chapel or to private benefactors. With the support of the Foundation Baillet-Latour, the Music Chapel has been able to order instruments to renowned luthiers such as C. Bayon, A. Hellinge, C. Coquet, T. Bertrand, P. Robin, H.H. Uilderks,...

For exceptional instruments, the Music Chapel will require the borrower to pay 50 percent of the insurance premium for the instrument. When used at revenue-generating performances, 100 percent of the insurance premium will be payable by the borrower. A confidential inventory will be made available to musicians of the string section.

Upon recommendation of the Artistic Department, the Executive Committee must approve all instrument loans. Proper documentation will be drawn up and signed by the borrower.

Violins, violas & cellos

The Music Chapel acts as the coordinator between our young soloists and private sponsors that lend us instruments. The Chapel then lends these instruments to the artists in residence, and acts as surety for this loan.

Pianos

Because we believe it is important for our young musicians to be able to perform on, and adapt to, any piano, we make pianos of different brands available to them. The concert hall contains our two concert pianos: a Bosendorfer and a Yamaha CFX. These pianos must be used only for concerts, lessons and masterclasses with Masters in Residence, as well as for exceptional events upon demand.

In the new building, artists in residence at the Chapel are housed in 20 studios, each of them equipped with a medium grand piano, so that they can practice in their soundproof room. They also have access to four working studios equipped with a Yamaha or Steinway piano. Moreover, young musicians also have at their disposal the piano, dating from 1910, that belonged to Queen Elisabeth and was made especially for her.

Contact

Anne-Lise Parotte

alparotte@musicchapel.org

2.5.6 CD Collection

The Music Chapel promotes its artists and their art to help them gain exposure. In partnership with the music label Outhere (Fuga Libera/Zig Zag Territoires/Alpha: Music Chapel Collection), we release one CD per year to promote the best young soloists. www.outhere-music.com

CD releases in 2018-2019: Trio Zadig, Bernstein, Ravel and Attahir – Busch Trio, Dvorak complete works (3).

CD projects in 2019-2020: Rolston Quartet, Tchaikovsky, Tribute to Ysaye (5 CD box).

2.5.7 Library

The library is integrated in a research program which makes the opening days and hours variable. The collection is accessible for all artists, but, in order to consult the collection, an appointment must be taken with the librarian (xfalques@musicchapel.org). To order music sheets, please send an e-mail to Xavier, mentioning the name and edition you need. Make sure you always **order in advance**. The library provides originals on very few occasions, in order to avoid damages. Instead, the librarian provides paper and/or electronic copies of the requested pieces, in the requested edition. It is therefore possible to buy and give access to material that wasn't part of the Chapel's collection before an artist's request. This allows the Music Chapel to provide an open library adapted to the various MuCH seasons.

If there is not any edition of the requested piece, the library can take care of the edition of manuscripts, as well as transpositions and arrangements (see beforehand with Xavier).

Eventually, archives from the Music Chapel will be accessible for consultation in order for musicians and researchers to find information over the history of our institution. The library is also in charge of a musicologic and scientific dimension in collaboration with the Catholic University of Louvain-la-Neuve: for next seasons, lectures and conferences given by musicologists and/or academic instrumentists over various subjects will be organized. More than just providing access to the musical heritage of our institution, the MuCH library is willing to integrate musical researches to the everyday life of the Music Chapel.

Contact

Xavier Falques

xfalques@musicchapel.org

2.5.8 Contact

Communication Department

Sophie van der Stegen, Head of Communication Dpt & Dramaturgy
svanderstegen@musicchapel.org
+32 471 37 52 28

Laure Raimondi, external publications, website & community manager
lraimondi@musicchapel.org
+32 495 15 82 03

Johanna Filée, audience management & protocol
jfilee@musicchapel.org
+32 2 352 01 17

Christelle Hulet, Publications, Merchandising & Social media
chulet@musicchapel.org
+32 2 352 01 17

Jorge Varela, volunteer assistant
jvarela@musicchapel.org

2.6. Residency

Our young soloists are residents at the Music Chapel all year long. In 2019-2020 we will welcome 77 artists of 24 different nationalities. This allows them to develop in a warm and musical environment. We provide studios for our artists so that they can reside at the Music Chapel and can live and work in an ideal environment.

The Music Chapel inaugurated its new facilities in January 2015. The new building provides an outstanding infrastructure for our cultural and artistic activities. It includes 20 studios in addition to 2 rehearsal studios and 1 concert hall (H.T. Hall). The support of public and private partners has been of the utmost importance in making this dream become a reality.

The campus

Quality of this exceptional setting:

- an ideal environment for concentration, work, meditation, conviviality and exchange;
- the proximity between the team of the Music Chapel, the teaching staff and the musicians;
- coherence between the teaching philosophy and the quality of the environment in which instruction is imparted.

2.6.1 Board and lodging

Residents may apply to the Music Chapel for full time occupancy of a studio at the Music Chapel. If and when admitted for full time occupancy of a studio (c/o the **Finance and Administration Department**), the facilities can be used throughout the year. The acceptance of a studio by the resident implies a contractual engagement for the full academic year, i.e. nine months.

General

An inventory of fixtures of the studio will be drawn up at the beginning of the year and signed by the resident. An electronic badge providing access to the front door will be issued to boarding artists. During weekends, official holidays and school holidays, residents may stay in their assigned studios, except during periods determined by the Executive Committee (e.g. the finals of the Queen Elisabeth International Music Competition and other special circumstances).

On special occasions visits may be authorized upon written request to the

Artistic Department. Residents shall handle all furniture, equipment, instruments, etc. placed at their disposal with respect. No changes to the basic studio layout are allowed. Damage to any equipment or furniture will be notified without delay to the housekeepers.

No mutual exchanges of studios will be authorized without the prior consent of the Artistic Department. In the absence of the usual tenant, the Music Chapel may make a studio available at all times to another artist or a Master in Residence in connection with a course or rehearsals, or to lodge a person. The studio's occupant will sign a document, confirming their obligation to leave the studio in perfect condition and to notify any problems that may have arisen during their stay. In the event of **extended non-use**, the studio may be reassigned to another person.

Other than during their the courses, boarding residents are asked to **work in their respective studios**.

Pets are not allowed in the building.

Smoking is strictly prohibited inside the building and in front of the entrance to the Music Chapel, as is the burning of candles, incense and the like. Residents shall pick up and get rid of their cigarette butts when smoking outside.

The **use of narcotics** or any similar substances is strictly forbidden and may lead to a decision of expulsion from the Music Chapel by the Executive Committee. The whole building is under camera surveillance, except for housing studios.

Boarding residents

A **laundry room and common kitchen** are at the disposal of the boarding artists. Respect towards others requires each resident to be neat and tidy and to make proper use of the machines and materials placed at their disposal. Inspections will be carried out regularly. If the management should note hygienic shortcomings or failure to comply with the house rules, sanctions may be applied and/or the facilities may be closed.

All residents are required to **close the windows** and **switch off the lights** in their studios and all rehearsal rooms when they leave. They could otherwise be held responsible in case of loss or damage.

The access to the **HT Concert Hall** (New Building's concert hall) is prohibited except for concerts and masterclasses. This is to preserve the special concert piano from daily training. However the artists may reserve the HT Concert Hall for special rehearsals and recordings.

Unauthorized **access to the offices is prohibited**.

Absolute silence in the corridors is required during concerts in the Grande Salle (all visitors shall refrain from slamming doors or talking, must walk softly, and make sure that the computer on the first floor makes no noise and that telephones do not ring).

Household linen is in the cabinet, and is **only available to residents who requested housing**.

Residents who wish to take a shower and need a towel must ask the Logistics Department first.

Residents have to pay for the housing fees in cash and **upon arrival**.

In case of absence, boarding resident **must** inform Karine of their absence at least **a week before their departure**.

Financial conditions for full time occupancy of a studio

Upon moving into a studio or an external room, a **deposit of 250 €** will be payable (in addition to the general deposit applicable for all artists in residence) as key money and to cover any loss of goods or equipment, damage to or deterioration of the furniture, the fixtures and other equipment, other than normal wear and tear of the studio or room.

The participation fee for full time occupancy is **450 € per month, payable before the 1st of every month to the following account**:

Chapelle Musicale SA FS/ IBAN BE38 3630 7318 0072 / BIC BBRUBEBB.

During periods determined by the Executive Committee (e.g. the finals of the Queen Elisabeth International Music Competition), when boarding residents cannot occupy their assigned studios, the monthly fee will be reduced in proportion to the period of unavailability.

As a matter of fairness, no one will be allowed to attend any lessons or master classes until the 500 € reservation fee has been paid. And no one will have access to housing, bikes, games, or any other material advantages until the reimbursable 250 € deposit has been paid.

The park must be kept neat and tidy, and all waste (cups, cigarette butts, etc.) must be binned.

Meals

12:30 - 02:30 p.m. lunch (The Artist Village)

All residents can have a free lunch (a warm meal) if they register the week before. Artists in residence are requested to inform their presence and/or absence for meals by Tuesday of the preceding week. The participation fee for occasional meals (parents, visitors) is 18 € per person per meal.

Transport

Fixed schedule: Monday to Friday for shuttles between Waterloo train station and the Music Chapel. For the first shuttle of the day, please inform Alain **the day before**.

Music Chapel Waterloo station

09:50	10:00
11:50	12:00
12:50	13:00
13:50	14:00
15:45	16:00
17:20	17:30

In addition to these shuttles, there is a “groceries shopping shuttle” on every Thursday upon reservation.

Music Chapel > Carrefour

14:15

Carrefour > Music Chapel

15:15

Contact

Alain Canivet

acanivet@musicchapel.org

+32 473 76 21 35

Housekeeping

Residents are expected to be irreproachable in their behavior and to keep their studio tidy and in good order at all times. Boarding artists are required to take care personally of the cleaning of their studios. Cleaning equipment is available for residents in the common area.

The Music Chapel organizes deep cleaning of the studios **once a month**, to help residents to maintain good condition of this house.

It is not allowed to move furniture between studios or to change the basic

layout of the studio. Small equipment such as chairs and music stands moved occasionally into a studio will be promptly returned to their place of origin after use.

Every bed is provided with a mattress protector. All artists in residence are expected to take good care of it. Boarding residents will promptly notify the housekeepers of any defect, damage or other problem occurring in their studio, so as to enable prompt repair and avoid further degradation.

Food and alcohol are prohibited in the studios. A common kitchen is provided for this purpose.

The Logistic Department stores food in the fridge for about 25 people for weekdays. Each Thursday at 03:00 p.m., a shuttle is provided for residents for shopping in supermarket, as well as to stock food for the weekends.

All residents are requested to respect the sleep of others. No noise in the common areas will be tolerated after 11:00 p.m.

In the evenings of the concerts at the Music Chapel, some studios will be asked to be open for the public visit.

Occasional boarding

Insofar as possible, the Music Chapel will provide occasional lodging to commuting artists during specific projects (productions, master classes, courses) or concerts given by the relevant person. Bed linen and towels will be made available. Proper use of these is required. The participation fee in the expenses for an occasional occupancy of a studio is 30 € per person per night in the new building 25 € per person for a shared studio. Occasional boarding requests must be made to Karine **at least two weeks in advance**.

Depending on availability and demand for occasional lodging, artists may be asked to share a room with another resident.

Full time occupancy residents, who have freed up their studio for the summer break, may use a studio on a daily basis during the summer period, with proper notification at least two weeks in advance. The same financial conditions as for occasional boarding will apply.

Full time occupancy residents wishing to keep their reserved studios during the summer months are allowed to do so depending on availability, subject to payment for the entire three-month period.

Entertainment

Several games are available to residents, such as **outdoor games** (badminton,

ton, table tennis, etc.) and **board games**.

Bikes are also at your disposal, as long as you book your bike one day in advance. Inform the artistic department and receive a helmet, lock and safety vest.

Residents are responsible for the bikes and games. If you lose or damage one of these, you will lose the 250 € deposit that you paid at the beginning of the year.

2.6.2 Contact

Admission

Danaé Baltsavias

dbaltsavias@musicchapel.org

+32 472 62 11 81 - +32 2 352 06 64

Logistics Department

Alain Canivet, logistics

acanivet@musicchapel.org

+32 473 76 21 35

Aurore Somme, housekeeper

sommeaurore@outlook.com

Lami Tchabebou, housekeeper

ltchabebou@musicchapel.org

+32 486 07 51 25

Karine Vilain, logistics, housing and meals

kvilain@musicchapel.org

+32 496 52 00 78

Finance and Administration

Quentin Bogaerts, Financial Director

qbogaerts@musicchapel.org

+32 2 352 01 10

Paul Borschette, administration

pborschette@musicchapel.org

Artists in residence
2019-2020

3. Artists in residence 2019-2020

Piano: Louis Lortie

Chair granted by Baillet Latour

Lorenzo Bovitutti



Luigi Carroccia



Alexandre Chenorkian



Jonathan Fournel



Salih Can Gevrek



Đorđe Radevski



Sergei Redkin



Axel Trolese



Guillaume Vincent



Violin: Augustin Dumay

Leon Blekh



Jeewon Kim



Meruert Karmenova



Shuichi Okada



Alexandre Pascal



Emily Sun



Young artists

Alexandra Cooreman



Viola: Miguel da Silva

Benedetta Bucci



Violaine Despeyroux



Natanaël Ferreira



Irénée Krumenacker



Mathis Rochat



Sofia Silva Sousa



Manuel Vioque-Judde



Cello: Gary Hoffman

Chair supported by Mr. & Mrs Eric Le Jeune

Riana Anthony



Mariona Camats



Jérémy Garbarg



Zachary Mowitz



Edvard Pogossian



Florian Pons



Maxime Quennesson



Guillaume Wang



Voice: José van Dam, Sophie Koch
Chair granted by an anonymous donor

Naomi Couquet, *Mezzo-soprano*



Julie Gebhart, *Soprano*



Lila Hajosi, *Mezzo-soprano*



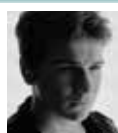
Fabien Hyon, *Tenor*



Louise Kuyvenhoven, *Soprano*



Alexander Marev, *Tenor*



François Pardailhé, *Tenor*



Carole-Anne Roussel, *Soprano*



Benjamin Schilperoort, *Baryton-basse*



Valentin Thill, *Tenor*



Chamber Music: Artemis Quartet , Miguel da Silva,
Jean-Claude Vanden Eynden

Adorno Quartet

- Edoardo Zosi
- Liu Pellicieri
- Benedetta Bucci
- Danilo Squitieri



Quatuor Aurora

- Jane Cho
- Natanael Ferreira
- Gabriel Esteban
- Elio Coria



Hanson Quartet

- Anton Hanson
- Jules Dussap
- Gabrielle Lafait
- Simon Dechambre



Karski Quartet

- Kaja Nowak
- Natalia Kotarba
- Diede Verpoest
- Julia Kotarba



Lassus Quartet

- Antonio Vinuales Perez
- Joel Bardolet Vilaro
- Adam Newman
- David Eggert



Associated Artists in residence

Elia Cohen Weissert, *cello*



Júlia Pusker, *violin*



Nancy Zhou, *violin*



Josquin Otal, *piano*



Victoria Vassilenko, *piano*



Dania El Zein, *voice*



Andrew Munn, *voice*



Iris Van Wijnen, *voice*



Thalea Quartet

- Christopher Whitley
- Kumiko Sakamoto
- Luis Bellorin
- Titilayo Ayangade



Rolston String Quartet

- Luri Lee
- Emily Kruspe
- Hezekiah Leung
- Jonathan Lo



Associated Artists

Nareh Arghamanyan — Quatuor Arod — Hrachya Avanesyan — Amalia Avilan — Nikita Boriso—Glebsky — Lidy Blijdorp — Busch Trio — Elina Buksha — Jane Cho — Pau Codina — Trio Dali — Charles Dekeyser — Hélène Desaint — Bertrand Duby — Ori Epstein — Lorenzo Gatto — Quatuor Girard — Nathanaël Gouin — Marie Hallynck — Hermès Quartet — Natania Hoffman — Yossif Ivanov — Pavel Kolesnikov — Leon Kosavic — Adam Krzeszowiec — Sarah Laulan — Christine Lee — Kerson Leong — Julien Libeer — Yung—Hsin Lou Chang — Anneke Luyten — Plamena Mangova — Dorine Mortelmans — Maria Milstein — Sébastien Parotte — Deborah Pae — Liya Petrova — Milos Popovic — Vineta Sareika — Amandine Savary — Julie Sévilla—Frayse — Yu Shao — Astrig Siranossian — Julia Szproch — Georgy Tchaidze — Shadi Torbey — Katarina Van Droogenbroeck — Ella Van Poucke — Rosalind Ventris — Esther Yoo — Trio Zadig



Admissions

© E. Bouvier

4. Admissions

4.1 Administration

To reserve their place at the Music Chapel, all accepted soloists and chamber music ensembles shall pay a non-refundable tuition down payment of **500 € upon confirming their attendance** and in any case at the latest by **20 October 2019**.

Upon arrival at the Chapel, all new artists (individually) are required to pay a **deposit of 250 €** to cover any loss of goods or equipment, damage or deterioration of the furniture, the fixtures or other equipment, other than normal wear and tear. An inventory will be drawn up at the beginning and end of each year. After deduction of any relevant charges, the balance of the deposit will be repaid upon leaving the Music Chapel.

All artists in residence are requested to provide a copy of their identity card and written proof of health insurance coverage. The Music Chapel will not cover hospitalization or medical expenses for residents, neither in Belgium nor abroad during a travel for purposes related to the Chapel. Residents should provide their official residence address and full details regarding their visa status, if applicable. Foreign artists from non-EU (European Union) countries with a temporary resident status, as a student or otherwise, should also provide their (so-called) Belgian National Number. It should be noted that to accept paid employment, including the receipt of artistic fees from any Belgian source, a Belgian work permit is required. The work permit will always mention the Belgian National Number.

Please note that a work permit is neither required for studying at the Music Chapel nor for giving concerts organized by the Music Chapel.

Residents must provide a Belgian bank account number to be used for the reimbursement of expenses and/or the payment of artistic fees. For (permanent or temporary) Belgian residents, no payments or reimbursements will be made as long as the Music Chapel has not been provided with the Belgian National Number.

Contact

Danaé Baltsavias

dbaltsavias@musicchapel.org

4.2 Tuition

The artistic expenses (fees and salaries of professors and artistic staff) amount to 25,000 € per artist in residence per year, on average for all sections.

4.3 Payment schedule

It is the policy of the Music Chapel to cover 50 percent of the artistic expenses by the tuition fees payable by the residents. The remaining 50 percent of the artistic expenses, as well as all overheads and non-artistic expenses, are financed by the general operating budget of the Music Chapel. The tuition fees payable by artists in residence total 12,500 € per year for all sections, except for the Preparatory/Young Talents modules (age 8 to 15) for which the tuition fees total 7,500 € per year.

For the academic year 2019-20, artists will be invoiced for tuition fees on a quarterly basis, according to the following schedule:

Reservation Fee	before the official academic opening
Tuition: 1st quarter	by October 20, 2019
Tuition: 2nd quarter	by December 15, 2019
Tuition: 3rd quarter	by February 16, 2020
Tuition: 4th quarter	by April 20, 2020

All payments should be made to the account of:

Chapelle Musicale Reine Elisabeth, fondation d'utilité publique

IBAN: BE64 3100 1847 5152

BIC: BBRUB EBB

Failure to pay the tuition fees according to the above schedule may lead to suspension from the courses or ultimately to exclusion from the Music Chapel.

4.4 Financial Aid

Artists in residence can apply for financial assistance on the basis of proven financial need by filling out a Financial Aid Application form. Financial assistance may take the form of an eponymous scholarship provided by a benefactor of the Music Chapel, or a general scholarship provided by the Music Chapel itself, financed by revenue from its endowment funds.

The Executive Committee will decide on the amount of the financial aid.

If, in the sole opinion of the Executive Committee, the resident does not adequately support his request for financial assistance, he or she will not be granted a financial aid.

4.5 Pledge of Honor

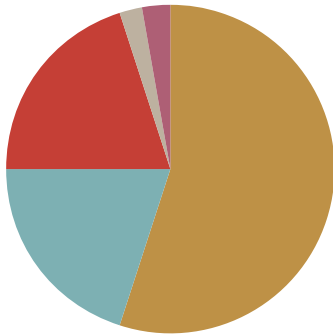
Artists in residence accepting a financial aid will be requested to sign a **pledge of honor** whereby they commit themselves to maintain an artistic relationship with the Music Chapel after they leave the latter, through a series of performances and a general effort to keep in contact with the institution. This pledge of honor is a sign of recognition towards the Music Chapel which enables its students to develop their musical skills by means of financial aid.

If the artist in residence becomes a recipient of a scholarship of an eponymous sponsor found by the Membership and Funding Department during the academic year, the scholarship will be granted to cover the remaining tuition to the full amount. The recipient undertakes to indicate on his artistic resume and in all publications that he “**benefited from a scholarship for advanced study at the Queen Elisabeth Music Chapel for the academic year 2019-20**”. The beneficiary of an eponymous scholarship will be requested to perform certain concerts as a sign of personal recognition towards the benefactor providing his scholarship. These concerts are part of the regular concert engagements required from all artists at the Music Chapel and for which no artistic fees will be paid (see the Artistic Program below).

4.6 The financial aspect of the Music Chapel

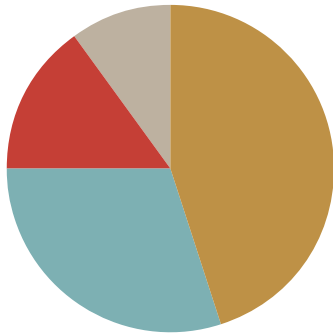
Source of Funds:

• residents' fee (tuition, studio rent)	3%
• endowment	2%
• subsidies (government)	20%
• cultural productions (revenues of the rental of the Chapel, tickets)	20%
• private partners (private and corporate sponsors, foundations)	55%



Uses of Funds:

• artistic (courses, rehearsals)	45%
• cultural productions (concerts)	30%
• communication (flyers, brochures)	15%
• administration	10%





General Information

5. General Information

5.1 The Music Chapel team

Executive Committee

Bernard de Launoit, *Executive President & CEO*
bdelaunoit@musicchapel.org
+32 475 23 94 40



Sophie Gosselin, *General Secretary & COO*
sgosselin@musicchapel.org
+32 2 352 01 17
+32 478 63 93 05



Anne-Lise Parotte, *Artistic Director*
alparotte@musicchapel.org
+322 352 01 12
+32 471 77 77 12



Laurence Godfraind, *Funding Director*
lgodfraind@musicchapel.org
+32 2 352 01 16
+32 474 99 28 63



Quentin Bogaerts, *Financial Director*
qbogaerts@musicchapel.org
+32 2 352 01 17
+32 479 64 20 03



High-level training

Artistic Department

Danaé Baltsavias
Artistic coordination (cello, viola & chamber music), Admission, Student & mediation support, Artist Village, Auditions
dbaltsavias@musicchapel.org
+32 472 62 11 81
+32 2 352 06 64



Auréli Loreau
Artistic coordination (piano & violin) & Auditions, Student & mediation support
aloreau@musicchapel.org - audition@musicchapel.org
+32 2 352 01 18
+32 4 72 30 51 14



Anne-Catherine Denies
Artistic coordination (voice) & enoa contact
acdenies@musicchapel.org
+32 2 352 06 64
+32 472 13 13 68



On stage

Cultural department

Bénédicte Bruynseels, *Cultural & production coordination*
bb Bruynseels@musicchapel.org
+32 2 352 01 14
+32 473 44 14 54



Florence Leeman, *Project manager*
fleeman@musicchapel.org
+32 2 352 01 14
+32 489 53 75



Natsumi Krischer, *Junior project manager*
nkrischer@musicchapel.org
+32 2 352 01 14
+32 499 31 22 42



Kyung Sook Langley, *Production assistant*
kslangley@musicchapel.org
+32 2 352 01 14
+32 471 93 80 14



Auguste Semanzi, *Stage manager*
asemanzi@musicchapel.org
+32 472 172 368



Community Project

Laura Wiatr, *Coordinator*
lwiatr@musicchapel.org
+32 472 19 04 09



Career development

Communication Department

Sophie van der Stegen, *Head of communication Dpt
& Dramaturgy*
svanderstegen@musicchapel.org
+32 2 352 01 17
+32 471 777 713



Laure Raimondi, *External publications, Website
& Community manager*
lraimondi@musicchapel.org
+32 495 15 82 03



Christelle Hulet, *Publications, Merchandising & Social media*
chulet@musicchapel.org
+32 2 352 01 17



Johanna Filée, *Audience management & Protocol*
jfilee@musicchapel.org
+32 2 352 01 17
+32 475 48 13 15



Jorge Varela, *Volunteer audience assistant*
jvarela@musicchapel.org
+32 2 352 01 17
+32 479 21 98 44



Library

Xavier Falques
xfalques@musicchapel.org
+32 474 47 86 21



Auriane de Fauconval, *Volunteer*
Jacqueline Buzin, *Volunteer*
Catherine Deprêtre, *Volunteer*
Martine De Theux, *Volunteer*
Michele Geubel, *Volunteer*
Pierre Soethoudt, *Volunteer*

Residency

Logistics Department

Karine Vilain, *Logistics and housing*

kvilain@musicchapel.org

+32 2 352 01 19

+32 496 52 00 78



Alain Canivet, *Logistics*

acanivet@musicchapel.org

+ 32 473 76 21 35



Lami Tchabebou, *Housekeeper*

ltchabebou@musicchapel.org

+32 486 07 51 25



Aurore Somme, *Housekeeper*

asomme@musicchapel.org

+32 485 97 91 98



Membership and Funding Department

Christine Reyntjens, *Public relations*

creyntjens@musicchapel.org

+32 2 352 01 16

+32 475 72 62 39



Elisabeth Bruyns, *Private funding coordinator*

ebruyns@musicchapel.org

+32 2 352 01 16

+32 478 26 68 12



Roxane Driessens, *Corporate funding coordinator*

rdriessens@musicchapel.org

+32 478 74 28 28



Finance & Administration

Paul Borschette, *Administration*

pborschette@musicchapel.org

+32 2 352 01 10



Tica Cabral, *Psychologist*

tcabral@musicchapel.org



5.2 Intranet

Wi-fi

Network: **QEMC**

Password: **QEMCwelcomesyou!**

We have created a space on Google where you will find all your documents constantly updated.

(Which means you should check it before your lesson/concert!)

To make things easier, please create a google account so that we can give you access to the Calendar and Weekly planning (drive).

Easy to use for everybody!

Step 1: Open a Google page: www.google.com

Step 2: Click on icon in the right upper corner

Step 3 : Select
“CALENDAR» for schedule during the year
“DRIVE” for weekly schedule

5.3 Miscellaneous

Usefull Phone Numbers

Medical Doctor

Dr Daubersy

rue de Lasne, 2 - 1380 Lasne

+32 2 633 64 09

+32 475 26 93 39

Weekend medical service

+32 2 354 15 94

Braine l'Alleud Hospital

+32 2 389 02 11

Medical emergency

Fire department

100

Local Police

+32 2 352 98 00

Commune/Town hall

+32 2 352 98 11

Foreigners' office

+32 2 352 98 94/95

National telephone Information

Dutch: 1207

French: 1307

International information number

Dutch: 1204

French: 1304

Medical center

Rue du Gaz, 1 - 1410 Waterloo

+32 2 354 05 52

Weekend service for dentists

+32 2 385 02 07

Clinique Saint-Luc

+32 2 764 11 11

Red Cross

105

Emergency number

112

National police

101

Taxis Waterloo

+32 2 354 28 41

+32 2 354 57 50 - 351 26 26

Taxi Sonia

+32 2 387 31 41

+32 495 209 750

Taxi Stéphane

+32 478 09 08 00

Taxis Verts Brussels

+32 2 349 49 49

Bpost (Belgian post)

+32 2 354 76 60

Osteopath

Anne Schutt

+32 485 03 13 87

anne.schutt@ap.be



Waterloo Map

Transport

Belgian Railway
www.belgianrail.be

THALYS (international rail transport)
www.thalys.com

TEC (public transport in Wallonia)
www.infotec.be

STIB (public transport in Brussels)
www.stib.be

Villo bike rental
en.villo.be

Going out

Activities
www.quefaire.be

Restaurants
www.resto.be

Waterloo swimming pool
 +32 2 354 12 70

I. Your training

How much will you pay for one year?

What happens when you get a sponsor?

One year at the Music Chapel costs in theory 12.500€ per student per year for all sections, as well as a 250€ general deposit at the beginning of the artist's curriculum (refundable when you definitively leave the Chapel).

Each student can apply for financial assistance, on the basis of proven financial need. There are two kinds of scholarship:

- General scholarship provided by the Chapel which covers part or most of your tuition: **up to 10 000€ each year (without registration fees)**, attributed to each artist in residence according to his financial background.
- Scholarship provided by a sponsor granted by our Funding Department: it depends on your financial background but also on the sponsor. These scholarships are usually (but not always) renewed from one year to another and can be granted at any moment of the year. They **cover the full tuition fees** except the 500€ registration fees.
- You can also apply to institutions providing scholarships independently from Chapel: governmental help or private institutions such as BAEF (USA), Vocatio (Belgium), Adami (France).

The registration fees and the deposit are mandatory fees for all artists in residence, regardless of the kind of scholarship you benefit from. These scholarships do not cover rent, housing fees or transports.

➔ *More info pages 68 to 70*

What do we expect from you regarding your training?

- To inform your artistic coordinator of your artistic program: specific projects, the list of pieces you'd like to work on, the competitions you plan on participating to, the important concerts coming up.
- To be present at all lessons. If you cannot be present, you'll have to notify your coordinator at least **48 hours ahead of time**.
- To perform 10 concerts.
- To participate to at least one community project per year.

- To answer all emails sent by the staff.
- To accept to be filmed or photographed in connection with your activities at the Music Chapel as well as to allow the Chapel to use these images for promotion.

➔ *More info pages 23-24, 38*

How to apply to concerts and how much will you get paid?

Answer the Concert Department's e-mail with a list of concerts you can apply for and give the repertoire you'd like to play. You will receive an e-mail confirming the concert dates if you are chosen, and discussing the final music program, etc. The date and musical program are then fixed and are binding. Your musical program should always be discussed with your teachers.

The first ten concerts are not paid as they are part of the requirements for your training. The 11th and subsequent concerts will be paid at the value of the highest categories performed during the year. Fees go from 100€ to 500€, depending on the category of the concert.

➔ *More info pages 29 to 32*

How can we help you when you have an important competition coming up?

For the video application, the Music Chapel offers two hours of recording per student per year in the HT, with a professional sound engineer for competitions. ➔ *More info page 43*

Get some run-through opportunities with the concerts and the midday sessions! ➔ *More info page 28*

Possible mental coaching sessions available to handle stress and anxiety.

➔ *More info page 35*

Need a score or an instrument?

The Music Chapel has a few violins, violas, cellos, and bows belonging to the Chapel or to benefactors, that we can lend you. Ask your coordinator to try the different instruments available! ➔ *More info page 44*

The library contains several scores. If you need one for a concert at the Chapel, send an email to Xavier! ➔ *More info page 45*

What does it involve to be admitted in the Artist Diploma curriculum?

During their curriculum at the Music Chapel, all artists in residence may be selected by the Masters in Residence in tandem with the Artistic Department to be enrolled in the Artist Diploma cycle. This curriculum allows artists to benefit from an extraordinary treatment (including participation to

exposed concerts, recordings, etc). At the end of this cycle, an evaluation in front of an external jury gives the chance to obtain the Artist Diploma certificate as well as an Artist Diploma recital recorded by the radio. A limited number of artists will earn the right to this recital. Artists who will have followed the Artist Diploma cycle but who won't have obtained the certificate will have the chance to give a regular concert in the following season.

The Artist Diploma recital takes the form of a one-hour recital whose program has been entirely chosen by the artist, in accordance with his or her personal artistic project and subject to approval by the management of the Music Chapel.

→ More info page 19

II. Your everyday life

Things to know when you live here

- **Rent:** 450€/month for full-time boarding
30€/night for occasional boarding (25€/night/person when you share a studio)
- **Meals:** hot meal provided from 12:00 to 14:00 on weekdays.
For the other meals, there's food in the fridges and in the Artist Village kitchen where you can help yourself. Let the Logistic Department know when you do or don't need a lunch.
- **Rules:** no pets, no smoking in the building, no cigaret butts left outside, no drugs, no mutual exchange of studios, no external guests without prior authorization of the Logistic Department, no fridges and other electronic machines in the studios, no food in the studios.

Artist Village and common spaces: leave everything behind you **clean and tidy**. Use the dish-washer and clean your dishes. Don't leave cups in the practice rooms and on the terrace.

In case of disrespectful behaviour, part of your deposit can be withdrawn.

→ More info pages 47 to 52

Artist Village Activities

Aside from the musical training, the Music Chapel provides different activities and opportunities to support artists in residence's well-being: physiotherapy, French lessons, work-out sessions, men-

tal coaching for competitions, mindfulness and other workshops to improve focus, well-being and creativity.

→ More info pages 34 to 35

How and when can you get a shuttle to/from the station?

From Monday to Friday, there are shuttles at the following times:

<u>Music Chapel</u>	<u>Waterloo station</u>
09:50	10:00
11:50	12:00
12:50	13:00
13:50	14:00
15:45	16:00
17:20	17:30

You can book them by sending a text to Alain (+32 473 76 21 35). During the hours covered by the shuttles (9:00 to 17:30) **the Chapel does not cover any taxi.**

Outside these hours (evenings, early mornings, on weekends), your artistic coordinator can book a taxi for you, only upon your request during the working hours. You will have to order a taxi by yourself if you forgot to ask for it during the week.

Need somebody's contact?

Staff's contacts → on pages 72 to 77

Masters, professors, coaches and accompanists' contacts → on pages 13 to 17

Artists in residence's contacts → on pages 56 to 64



Queen Elisabeth Music Chapel,
public interest foundation



THANK YOU!

Partenaires culturels / Culturele partners / Cultural Partners



octopus

C^{ie} Artichoke



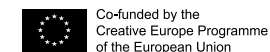
flagey



Queen Elisabeth Music Chapel,
public interest foundation
is member of:



#YoungOperaMakers by enCœ



This project has been funded with support from the European Commission.
This publication [communication] reflects the views only of the author,
and the Commission cannot be held responsible for any use which may be made of the information contained therein.



TESTAMENT.BE



Queen Elisabeth Music Chapel,
public interest foundation



THANK YOU!

Soutien public / Overheidssteun / Public support



Partenaires institutionnels / Institutionele Partners / Institutional partners



En collaboration avec / In samenwerking met / In collaboration with



Queen Elisabeth Music Chapel,
public interest foundation



THANK YOU!

Partenaires Structurels / Structurele Partners / Structural Partners

Main Sponsor



Co-sponsors



Fondations / Stichtingen / Foundations



Entreprises partenaires/ Corporate partners



All the MuCH Community

Les Mécènes / De Mecenassen / The Maecenas



Les généreux testateurs pour leurs legs / De gulle erflaters voor hun erfenis /
The generous testator for their legacy

Queen Elisabeth Music Chapel, *public interest foundation*

Under the Honorary Chairmanship of Her Majesty Queen Paola

Correspondence: Chaussée de Tervuren 445 - 1410 Waterloo - Belgium

Corporate address: Rue Brederode 14, B-1000 Bruxelles - BCE 459 245 906

Tel: +32 (0)2 352 01 10 - Fax: +32 (0)2 351 10 24

www.musicchapel.org - info@musicchapel.org